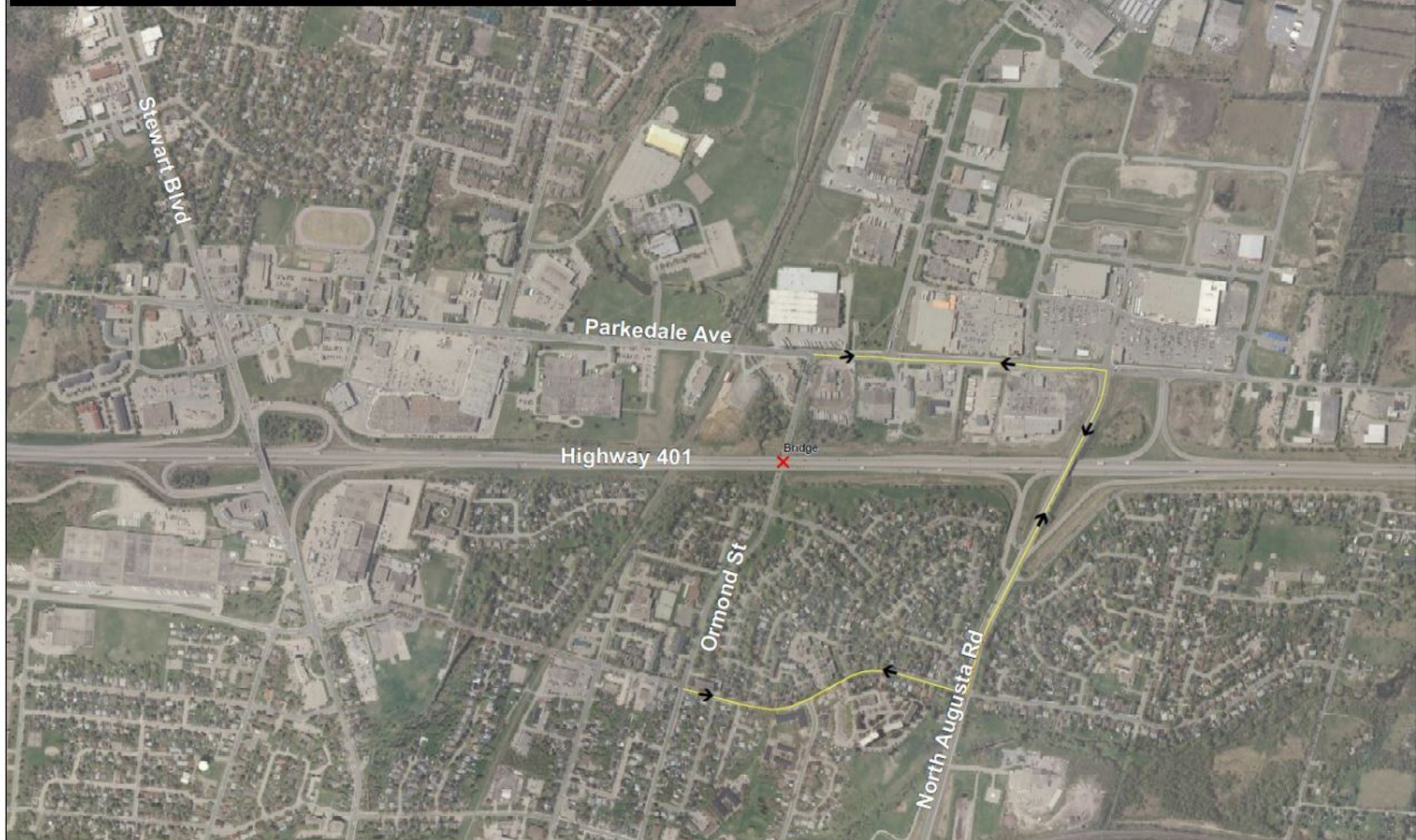
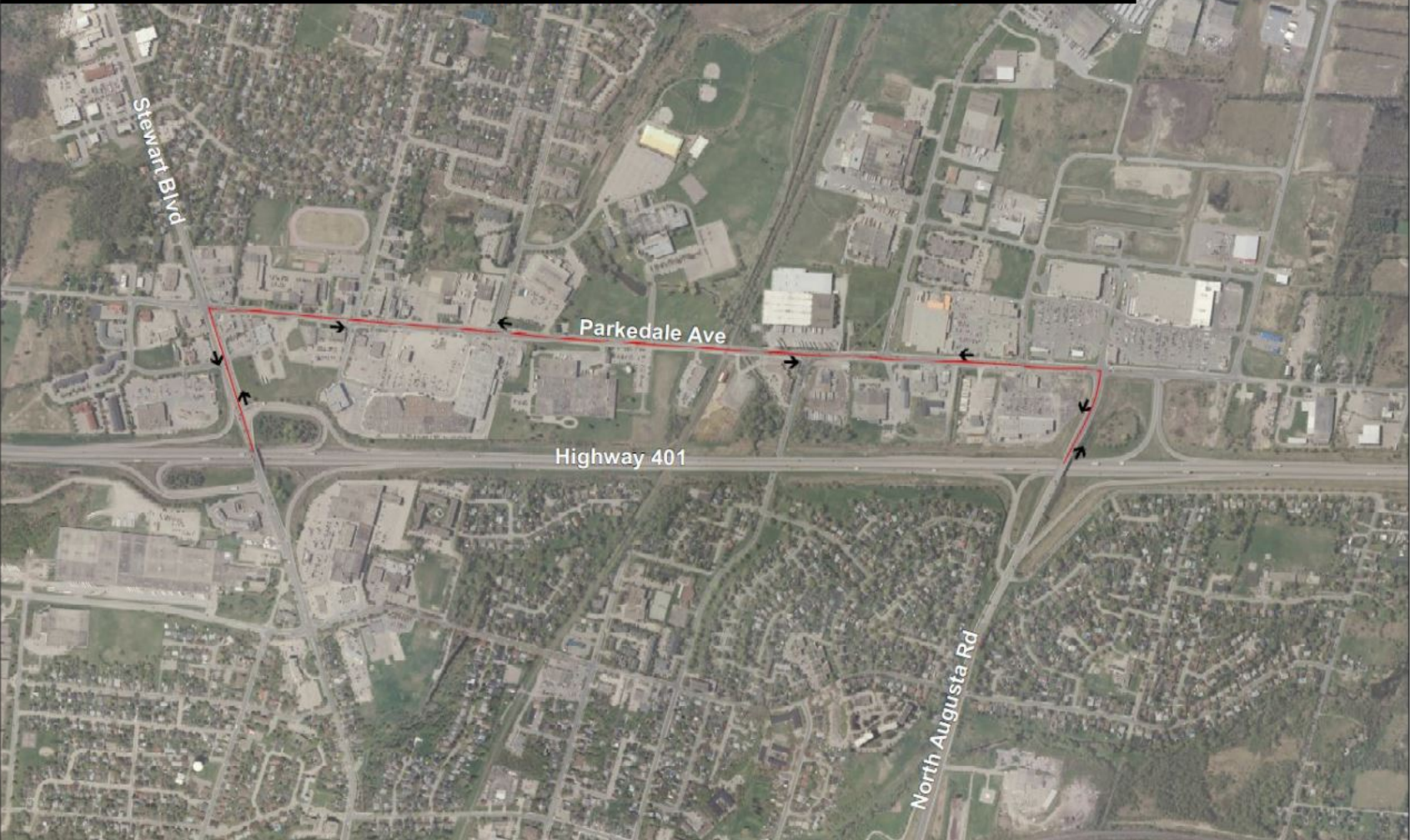


Potential Detour Route - Ormond Street Bridge Closure



Closure Location	Construction Activity	Duration
Ormond Street Overpass	Bridge demolition and construction of new bridge	Long-term (approx. 1 - 4 months)

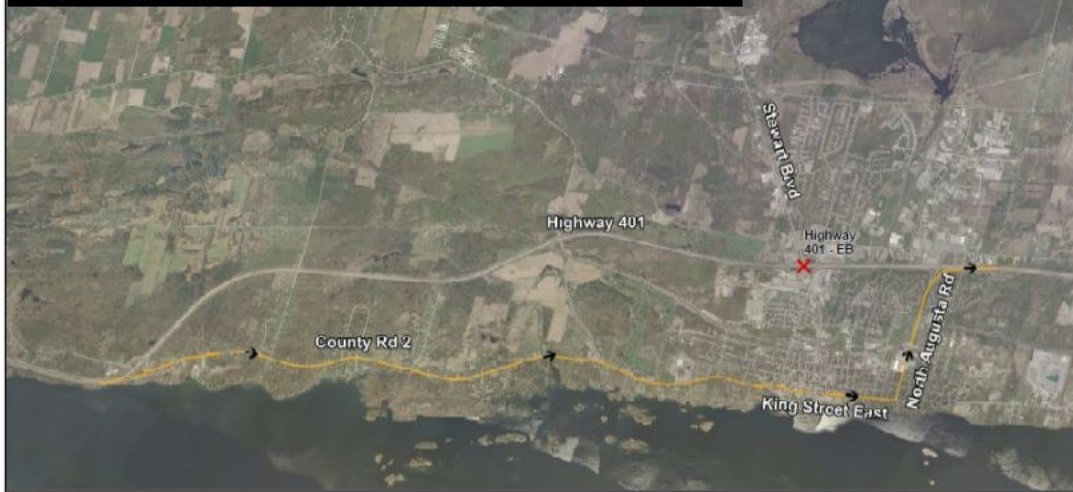
Potential Detour Routes – Stewart Boulevard and North Augusta Road Ramp Closures



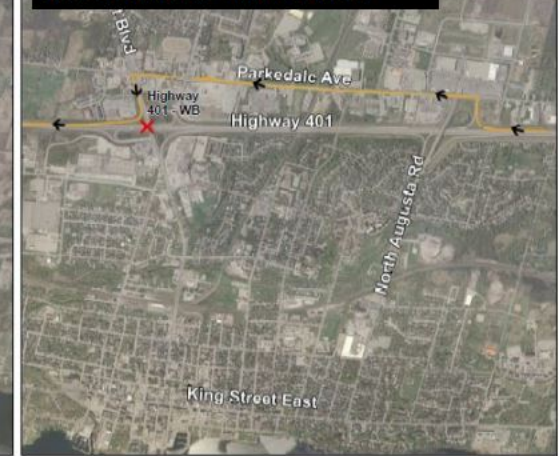
Closure Location	Construction Activity	Duration
Stewart Boulevard and North Augusta Road ramps	Remove existing ramps; construct new ramps	Short-term (approx. 1 - 30 days)

Potential detour routes of Highway 401 during demolition (i.e. overnight) of the structures

Highway 401 Eastbound at Stewart Boulevard



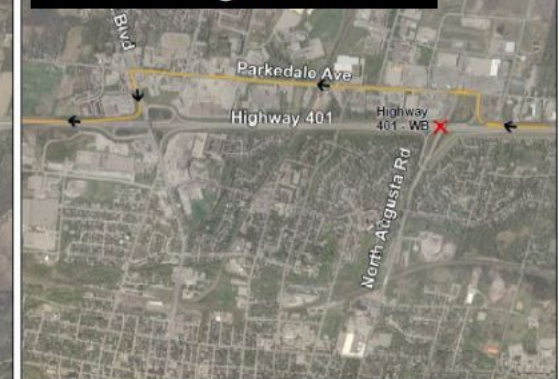
Highway 401 Westbound at Stewart Boulevard



Highway 401 Eastbound at North Augusta Road



Highway 401 Westbound at North Augusta Road



Closure Location

Construction Activity

Duration

Highway 401 EB between County Road 2 and North Augusta Road and WB between North Augusta Road and Stewart Boulevard

Stewart Boulevard bridge demolition and potential girder placements for new bridge
Overnight (approx. 12 - 18 hours)

Highway 401 EB between North Augusta Road and Maitland Road and WB between North Augusta Road and Stewart Boulevard

North Augusta Road bridge demolition and potential girder placements for new bridge
Overnight (approx. 12 - 18 hours)